

Our Hurricane design is focused on high load and larger hole size applications. The fastener uses an expanding petal design to enlarge on the blind side of a structure that pulls back on itself to provide clamping. The Hurricane Kwikbolt keeps holes true and provides a high clamp and high shear performance. Head configurations include Flat Protruding (FP), Countersunk Protruding (SP) and Countersunk Flush (SF).

Head Configurations

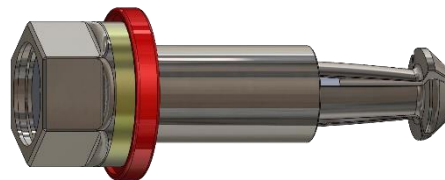
Countersunk Flush (SF)



Countersunk Protruding (SP)



Flat Protruding (FP)



E-Mail: info@kwikbolt.com

Web: www.kwikbolt.com

Phone: +44 (0) 20 3358 0481