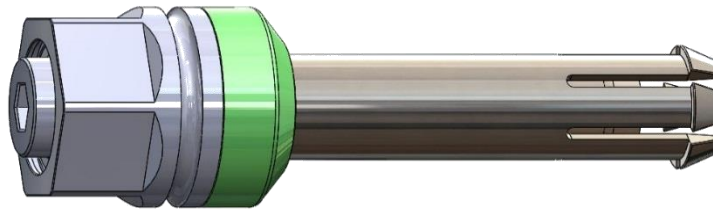


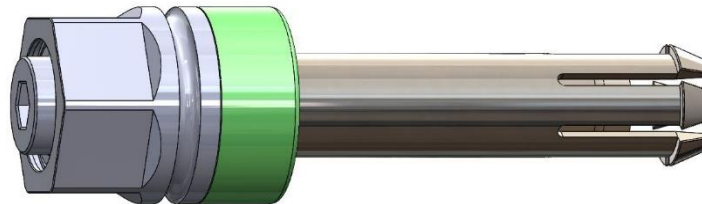
Our Thunder design is focused on applications that require small blind side clearance, needing a high load with larger hole sizes. The fastener uses a driven bar design to engage clamping by driving the legs into the head and pulling back on itself. The Thunder Kwikbolt keeps holes true and provides a high clamp and high shear performance. Head configurations include Countersunk Protruding (SP) and Flat Protruding (FP).

Head Configurations

Countersunk Protruding (SP)



Flat Protruding (FP)



E-Mail: info@kwikbolt.com

Web: www.kwikbolt.com

Phone: +44 (0) 20 3358 0481