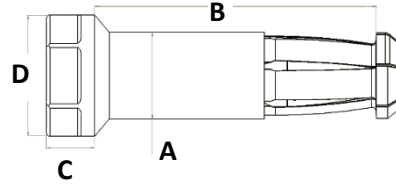
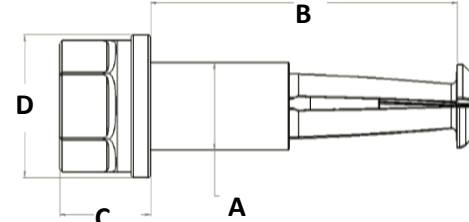


SF



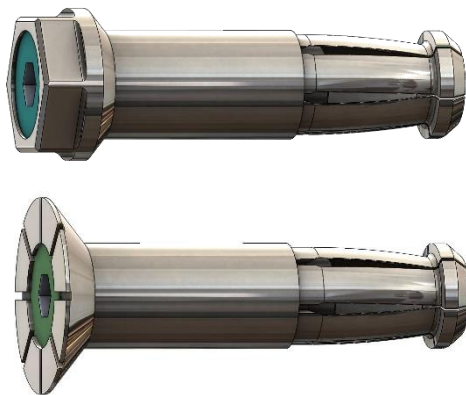
SP



FP

Part Code	A nominal mm (inch)	B mm (inches)	C mm (inch)	D1 min mm (inch)	Grip Range mm (inch) in 10mm (0.393) steps	Clamping Force Range N (lbf)	No of Cycles
1032-H2	7.94 (0.313)	Varies depending on grip range requested by customer	15.00 (0.590) to 19.00 (0.748)	15.00 (0.590)	1mm (0.039) to 150mm (5.905)	2,000 (450) - 4,000 (900)	500
1232-H2	9.53 (0.375)			19.00 (0.748)	1mm (0.039) to 150mm (5.905)	3,000 (675) - 6,000 (1,350)	500
1432-H2	11.15 (0.438)			22.00 (0.866)	1mm (0.039) to 150mm (5.905)	4,000 (900) - 8,000 (1,800)	500
1632-H2	12.70 (0.500)			24.00 (0.945)	1mm (0.039) to 150mm (5.905)	5,000 (1,125) - 10,000 (2,250)	500
1832-H2	14.24 (0.563)			27.00 (1.063)	1mm (0.039) to 150mm (5.905)	5,000 (1,125) - 10,000 (2,250)	500
2032-H2	15.90 (0.625)			30.00 (1.181)	1mm (0.039) to 150mm (5.905)	7,000 (1,600) - 14,000 (3,200)	500
2432-H2	19.05 (0.750)			38.00 (1.496)	1mm (0.039) to 150mm (5.905)	9,000 (2,025) - 18,000 (4,050)	500
3232-H2	25.40 (1.000)			48.00 (1.889)	1mm (0.039) to 150mm (5.905)	12,000 (2,700) - 24,000 (5,400)	500

Head Types | FP = Flat Protruding | SP = Countersunk Protruding | SF = Countersunk Flush      Grip Length Increments | 10mm



**XX-1232A-XXX-XXX-DXH2**

**Kwikbolt Part Numbering**

- Basic Part Number
- Grip Range
- Nominal Hole Diameter
- Head Configuration: SF -Countersunk Flush  
SP -Countersunk Protruding  
FP -Flat Protruding

Colour coding to customer specifications. Other loads, tolerances and diameters available to customer requirements

E-Mail: info@kwikbolt.com

Web: www.kwikbolt.com

Phone: +44 (0) 23 8220 5775